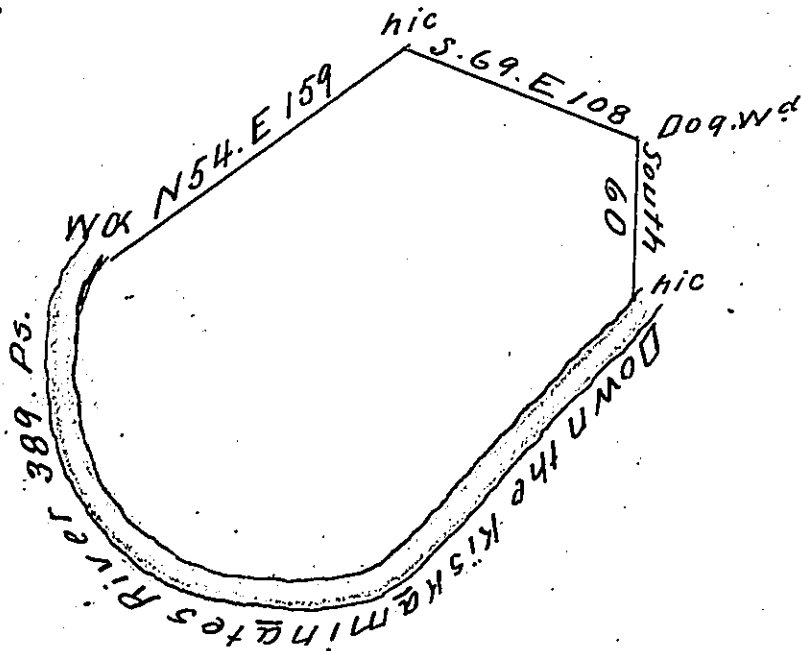


hills

The Courses & Distances

down the River

- S 45 W 178
- N 83 W 74
- N 38 W 54
- N 7 W 60
- N 28 E 23



The Corn Fields Survey'd to Hugh Cunningham on the
 13th Day of October 1773 Containing Two hundred & Six
 Acres & a Quarter of an Acre & allowance of Six p Ct
 Situate on the North Side of Kiskaminates opposite the
 Old Town in Westmorland County By Warrant of the
 10th Day of September 1773

p. Joshua Elder D.S.

To John Lukens Esqr J. Genl

IN TESTIMONY that the above is a copy of the original remaining on file in
 the Department of Internal Affairs of Pennsylvania, made
 conformably to an Act of Assembly approved the 16th day of
 February, 1833, I have hereunto set my Hand and caused
 the Seal of said Department to be affixed at Harrisburg,
 this fifteenth day of February 1904

Isaac B. Brown
 Secretary of Internal Affairs.